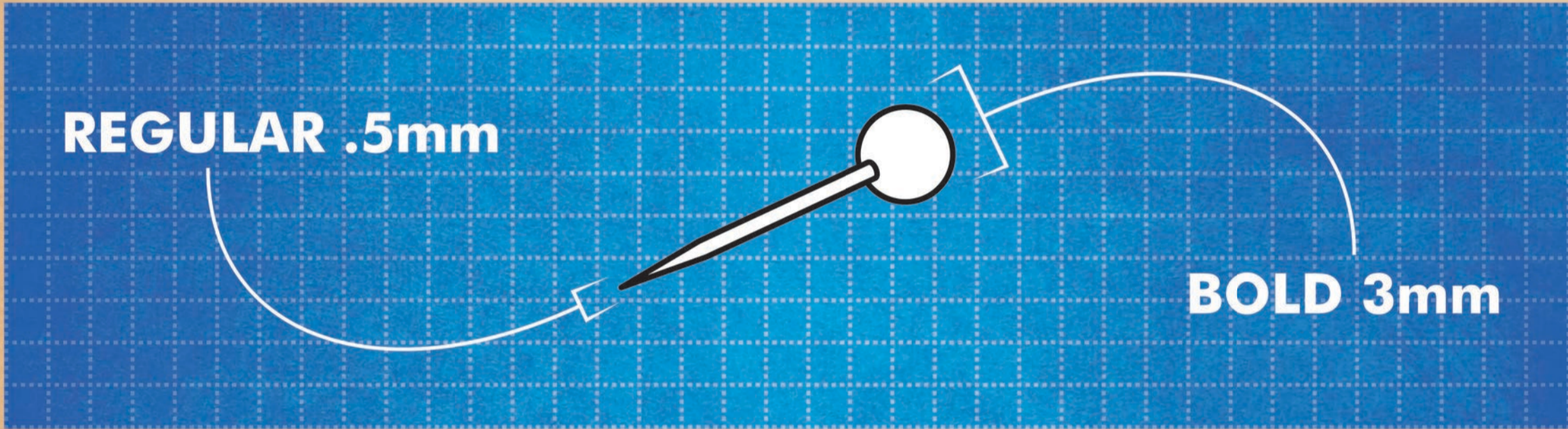
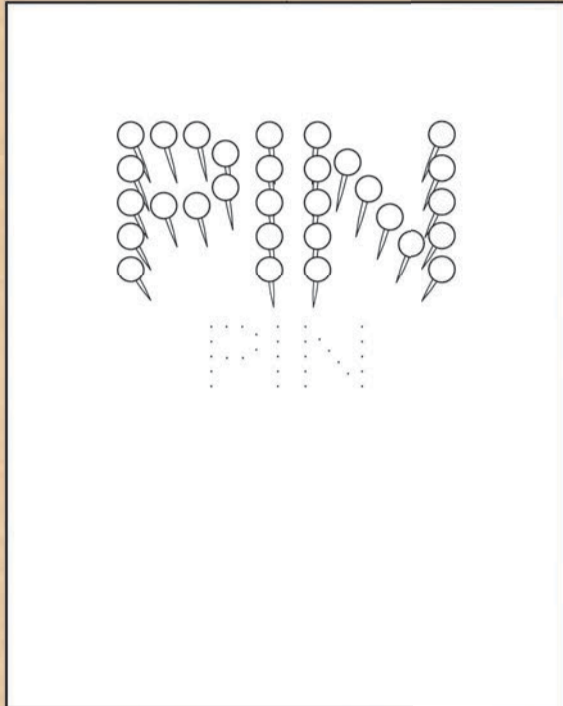
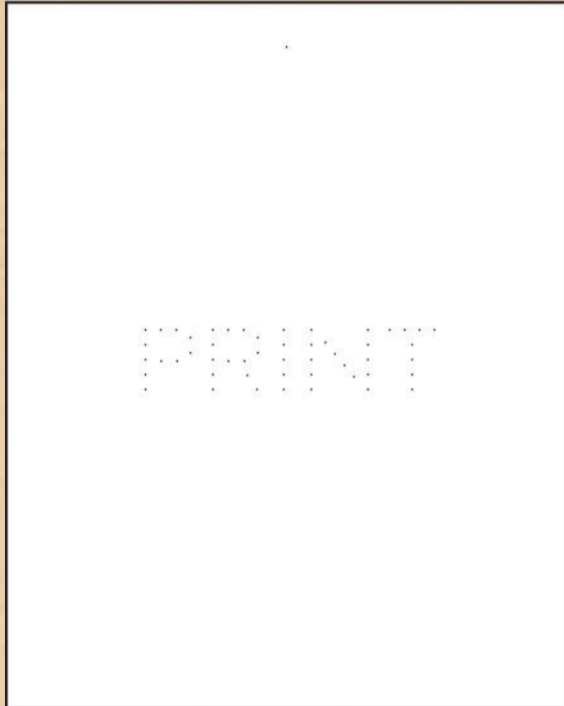
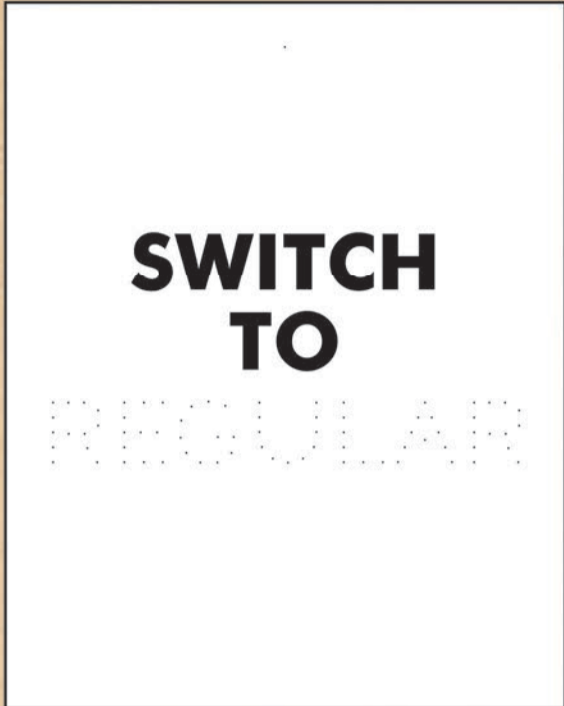
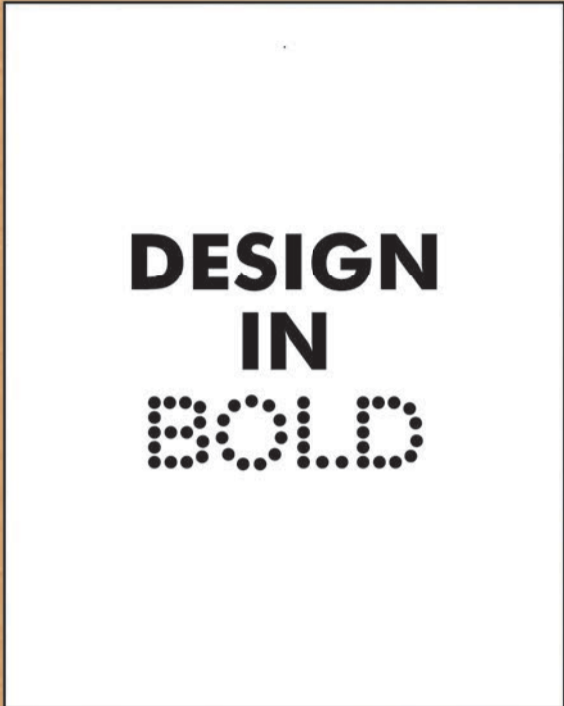
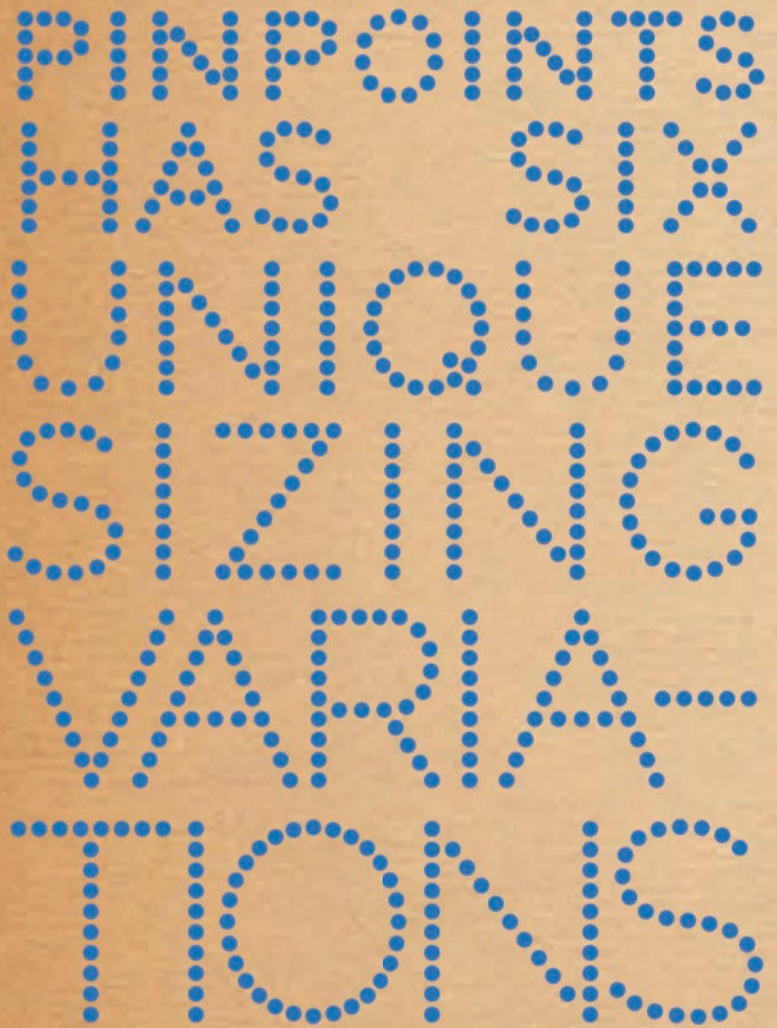


PINPOINTS

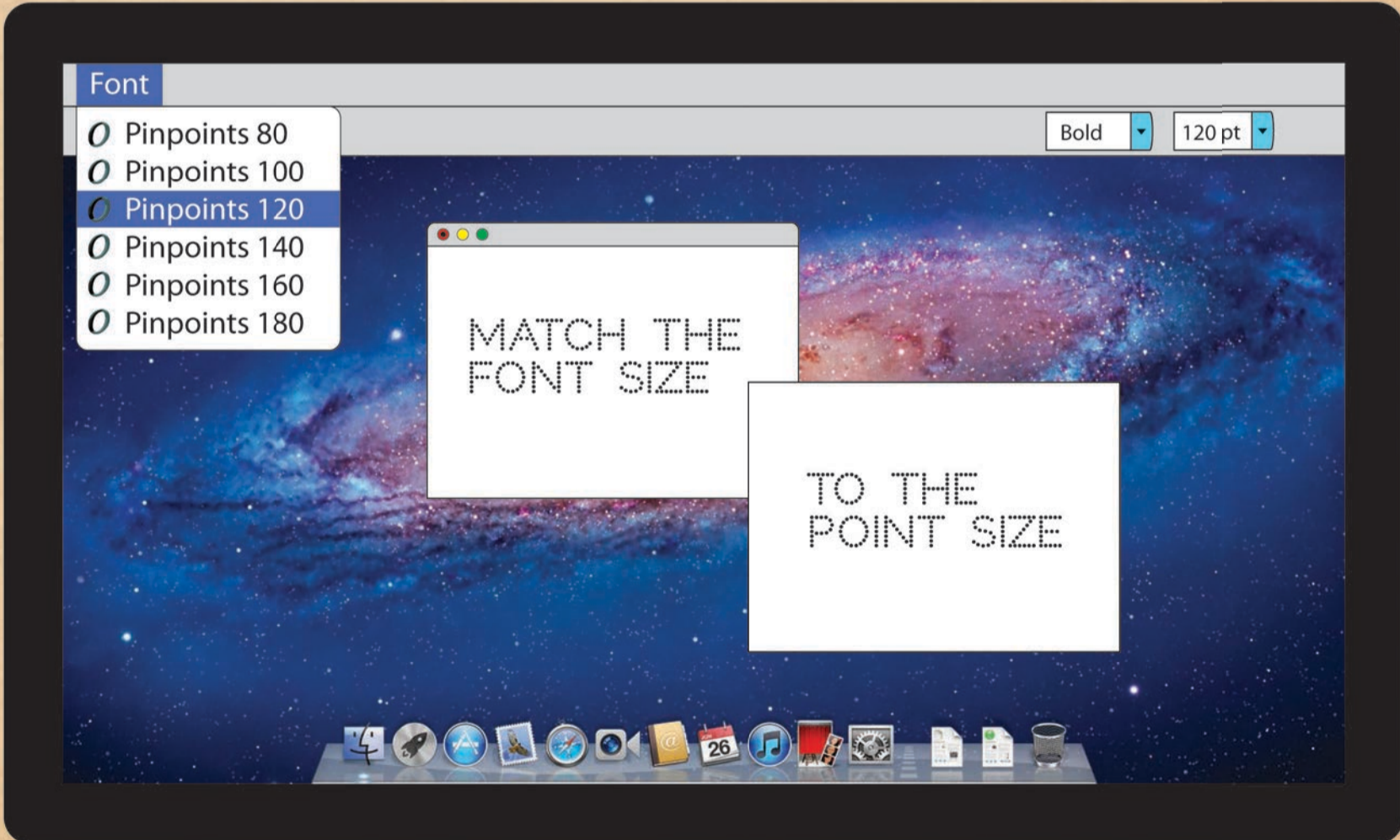
USER'S GUIDE



SIZING



- 80pts
- 100pts
- 120pts
- 140pts
- 160pts
- 180pts



FOR LARGER or SMALLER PINS

- 80pts = 3.25
- 100pts = 3.24
- 120pts = 3.23
- 140pts = 2.45
- 160pts = 4.54
- 180pts = 4.43

$$\frac{3.45 \times 7}{=125}$$

125 pt

